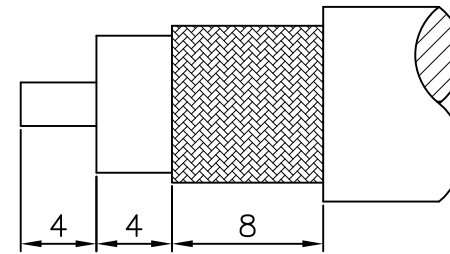
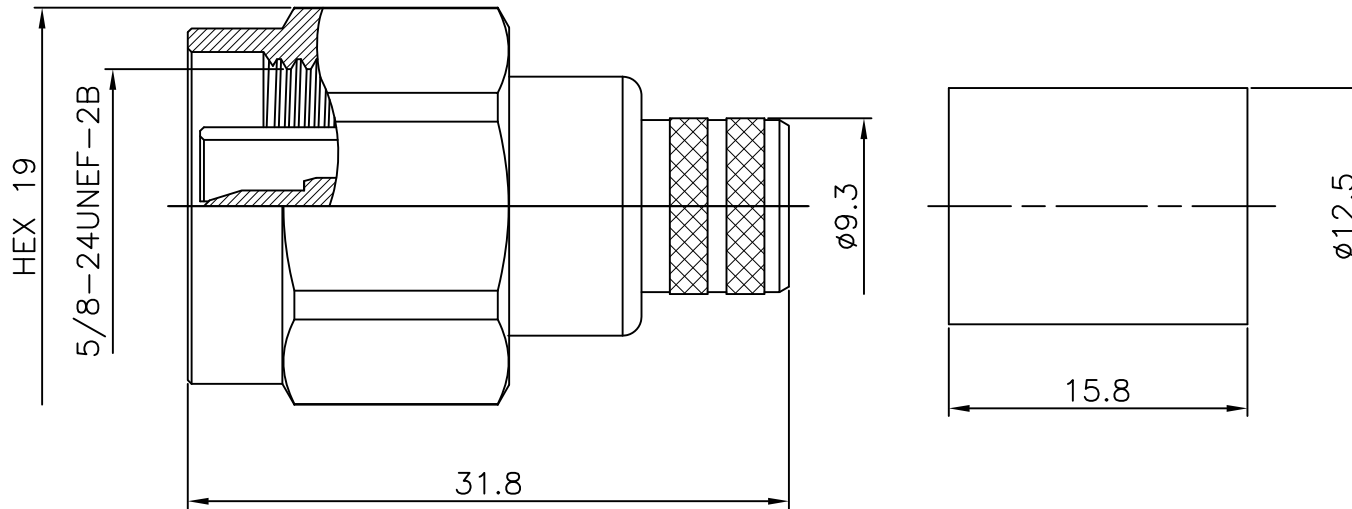


Notes:

1. ELECTRICAL:
 - A. IMPEDANCE: 50 OHM
 - B. FREQUENCY RANG: 0-11GHz
2. ENVIRONMENT:
 - A. TEMP RANGE: -55°C TO +155°C
 - B. RoHS COMPLIANT



RECOMMENDED CABLE STRIPPING DIM'S



1.CRIMPED FERRULE HEX CRIMP SIZE 10.9(RCT-214)

| | | | | |
|-----|-------------|------------------|--------------|------|
| ⑧ | FERRULE | BRASS | White Bronze | 1 |
| ⑦ | CONTACT PIN | BERYLLIUM COPPER | GOLD | 1 |
| ⑥ | WASHER | BRASS | White Bronze | 1 |
| ⑤ | GASKET | RUBBER | RED | 1 |
| ④ | INSULATOR | PTFE | NATURAL | 1 |
| ③ | METAL PARTS | BRASS | White Bronze | 1 |
| ② | CRIMP | BRASS | White Bronze | 1 |
| ① | SHELL | BRASS | White Bronze | 1 |
| NO. | NAME | MATERIAL | FINISH | Q.TY |

DIMENSIONS ARE IN MILLIMETERS
UNLESS STATED OTHERWISE.
TOLERANCES
0.5-6 = ±0.2
6-30 = ±0.4
30-120 = ±0.6
120-315 = ±1
315-1000 = ±1.6
1000-2000 = ±2.4

| | | | | | | |
|--|-----------|---------|--------|------------------|---|--------|
| SIZE 5 : 2 UNIT mm PROJECT | APPROVALS | | DATE | TITLE | N CRIMP PLUG (FOR B9913, CNT400, LMR400 CABLE) | |
| | DRAW | Nico L | 120517 | MODEL | N-K4611102L6 | REV. C |
| | CHECK | River H | 120517 | DWG No | N-201 | REV. |
| | APPROVE | Derek A | 120517 | PULSE CONNECTORS | | |
| | | | | | | |